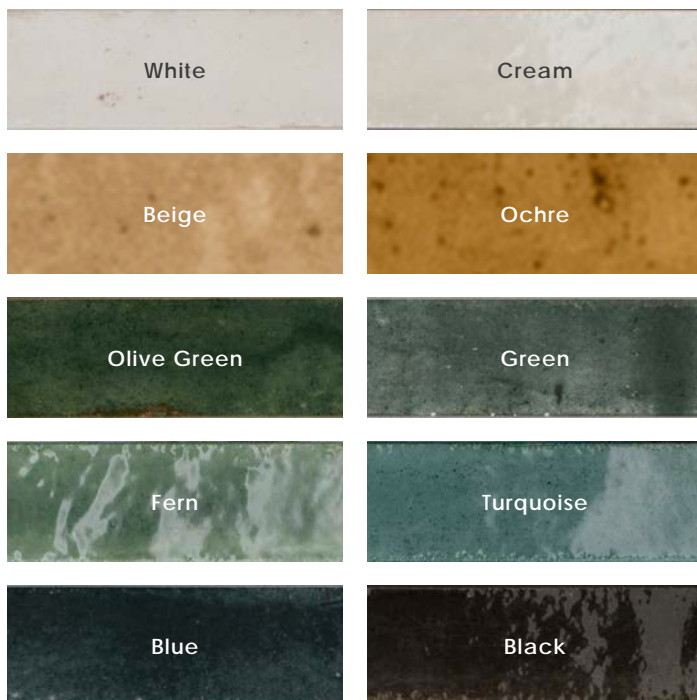




## Description

Forged porcelain tile is the imperfection statement of being one-of-a-kind. Beauty is unveiled through an exchange of light on surfaces in perfect harmony of tonal and surface variations. Each imperfection adds narrative to the story. A collection of true representation of artistry excellence.

## Colors



## Sizes

2.5"x9.5"

## Technical Data

Specification Reference	Test Method	Test Result
DCOF	ANSI A326.3	Not Applicable - Wall Use Only
Water Absorption	ISO 10545-3	< 0.5%
Breaking Strength	ISO 10545-4	R>35 N/mm <sup>2</sup> , S>1300 N

Body Type	Shade Variation
Glazed Non Color-Body Porcelain	V2 • Black, Ochre, White
	V3 • Beige, Blue, Green, Olive Green

## Finish & Thickness

Glossy | 10mm

## Lead Time

8-10 Weeks  
Domestic inventory available at  
premium price.

## Location

Italy



2024v2



Turquoise Ribbed

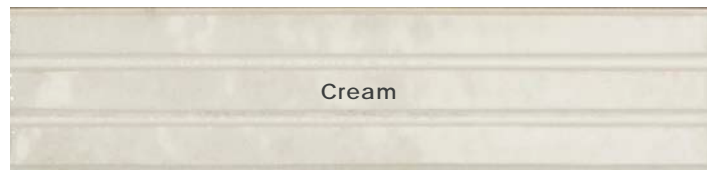


White Ribbed

Ribbed 2.5"x9.5" x13.5mm Glossy



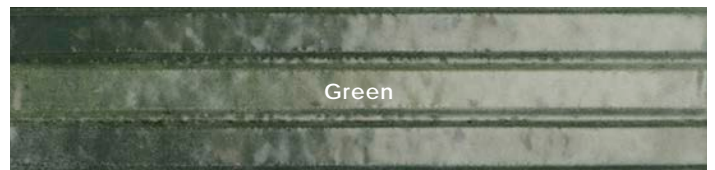
White



Cream



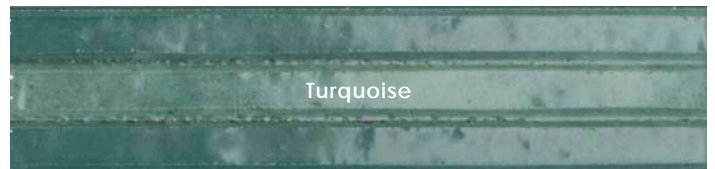
Olive Green



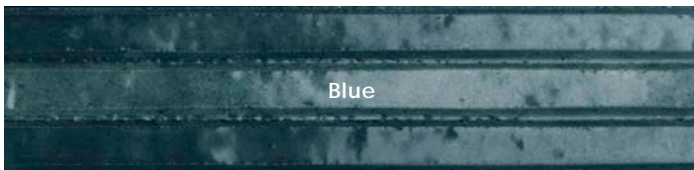
Green



Fern



Turquoise



Blue



Color•Size•Finish Matrix

Color — Size & Thickness										
	White	Cream	Beige	Ochre	Olive Green	Green	Fern	Turquoise	Blue	Black
2.5x9.5" x9mm	Glossy	Glossy	Glossy	Glossy	Glossy	Glossy	Glossy	Glossy	Glossy	Glossy
Bullnose 2.5"x9.5"x10mm	Glossy		Glossy		Glossy	Glossy			Glossy	Glossy
										

Color — Size & Thickness							
Ribbed	White	Cream	Olive Green	Green	Fern	Turquoise	Blue
2.5x9.5" x13.5mm	Glossy	Glossy	Glossy	Glossy	Glossy	Glossy	Glossy

Chart indicates available size, color, finish and thickness options. Shaded block indicates not available. Sizing is nominal for field tile, trims, and decors.

