

# WOOD COLLECTION 04

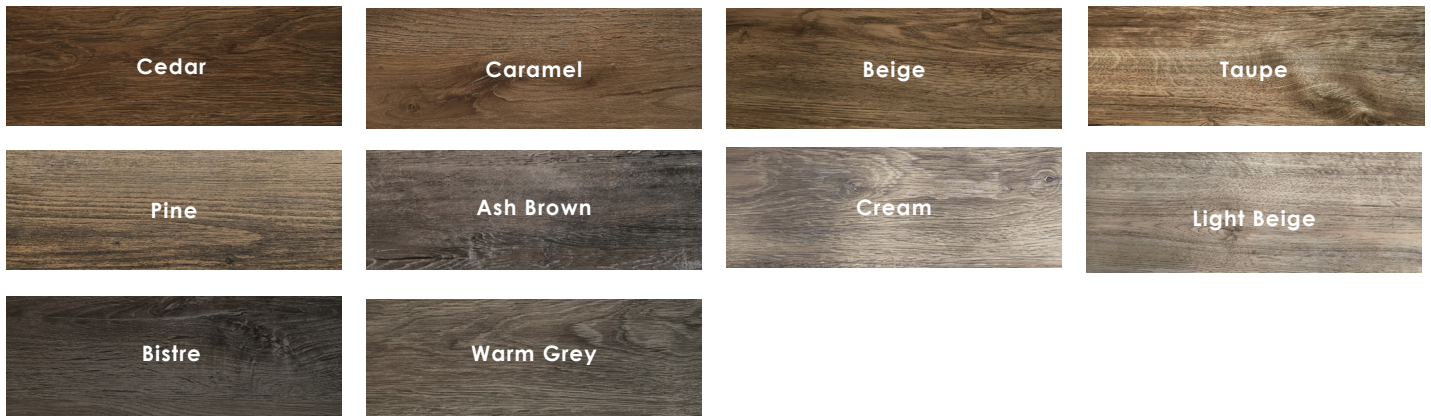
creative  
materials  
corporation



## Description

Wood Collection 04 is a classic LVT wood look brought to life with a 20mil wear layer, a budget-friendly price-point, and superior scratch and stain resistance. Look no further than the Wood Collection 04 for your commercial projects.

## Colors



All colors have a minimum order quantity of 2,000 SF and applicable production lead time.



Bistre

## Sizes

6"x48"

## Technical Data

Specification Reference	Test Method	Test Result
Static Load	ASTM F970	Passes - 1,500 PSI
Heat Resistance	ASTM F1514	Passes
Light Resistance	ASTM F1515	Passes
Chemical Resistance	ASTM F925	Passes
Smoke Density	ASTM E662	Passes < 450
Radiant Panel	ASTM E648	Passes, Class 1
Flexibility	ASTM F137	Passes, 1" Mandrel
Dimensional Stability	ASTM F2199	Passes, Max 0.020"/lft
Squareness	ASTM F540	Passes, Max 0.010"
Residual Indentation	ASTM F1914	Passes < 8% Avg.
Flooring Radiant Panel	ASTM E648P	Passes, Class 1
Classification	ASTM F1700	Class III, Type B

## Wear Layer & Thickness

20 Mil | 2.5mm

## Lead Time

6-8 Weeks

## Edge Profile

Square

## Location

United States

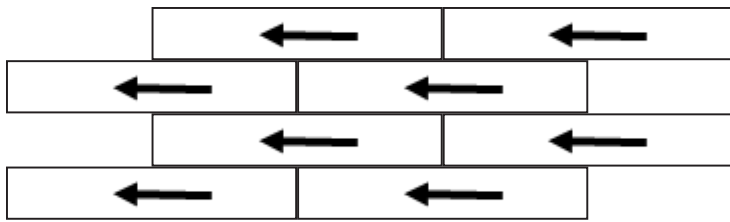
Body Type	Installation
Luxury Vinyl Tile (LVT)	Glue Down



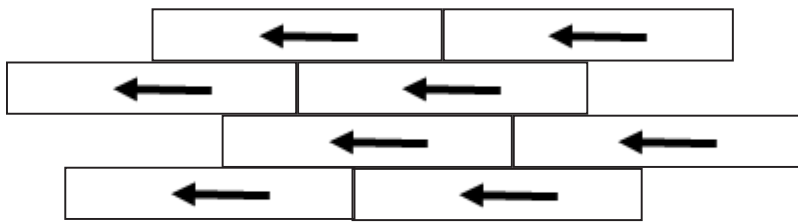


Light Beige

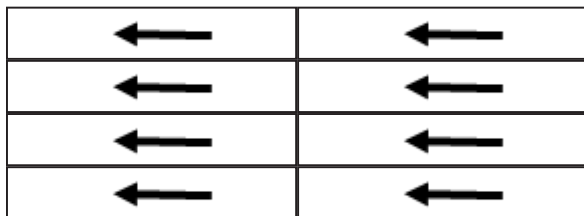
## Patterns



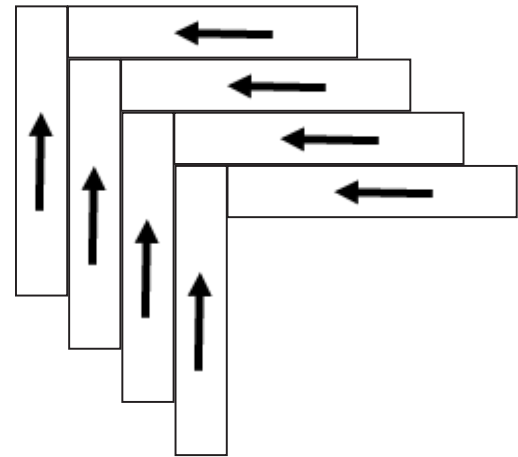
Brick



Stagger



Monolithic



Herringbone

## Color•Size•Finish Matrix

Color — Size & Thickness					
6"x48"x2.5mm	<b>Cedar</b>	<b>Caramel</b>	<b>Beige</b>	<b>Taupe</b>	<b>Pine</b>
Color — Size & Thickness					
6"x48"x2.5mm	<b>Ash Brown</b>	<b>Cream</b>	<b>Light Beige</b>	<b>Bistre</b>	<b>Warm Grey</b>

Chart indicates available size, color, finish and thickness options. Shaded block indicates not available. Sizing is nominal for field tile, trims, and decors.

