



Green, Mint, Green Shadow

Description

Evoke brings to mind the ability to have creative liberties with pattern play and design. It is an observation of familiar, earthy hues with a full exploration of creativity. The cotto-effect adds depth and dimension to the space with a sense of muted saturation.

Colors



Sizes



Technical Data

Specification Reference	Test Method	Test Result
DCOF	ANSI A326.3	Porcelain • > 0.42 Wet
		Ceramic • Not Applicable
Water Absorption	ISO 10545-3	Porcelain • < 0.5%
		Ceramic • > 10%
Breaking Strength	ISO 10545-4	Porcelain • $R > 35 \text{ N/mm}^2$, $S > 1300 \text{ N}$
		Ceramic • Not Reported
PEI	ISO 10545-7	IV

Finish & Thickness

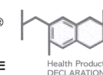
Matte | 8mm, 8.5mm
Finish varies per size and color –
Refer to Color•Size•Finish Matrix

Lead Time

8-10 Weeks

Location

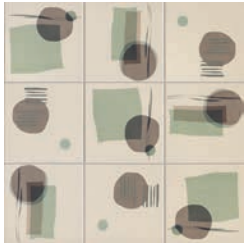
Italy



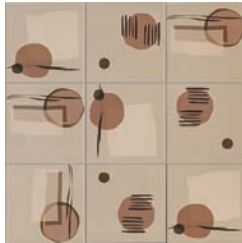


Decor

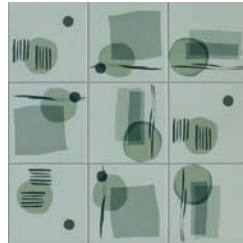
Shadow 6"x6"x8.5mm Matte • Porcelain



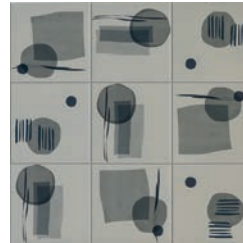
Pastel



Brown



Green



Blue

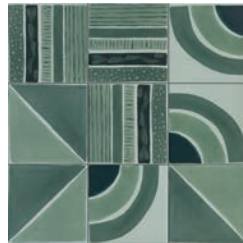
Path 6"x6"x8.5mm Matte • Porcelain



Pastel



Brown



Green



Blue



Decor

Fragments 6" x 6" x 8.5mm Matte • Porcelain



Pastel



Brown

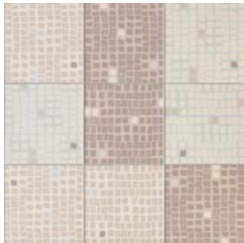


Green

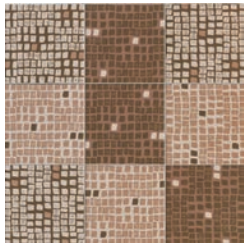


Blue

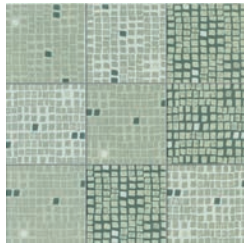
Harmony 6" x 6" x 8.5mm Matte • Porcelain



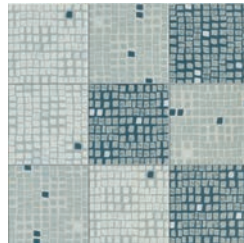
Pastel



Brown



Green



Blue

Color•Size•Finish Matrix

Color — Size & Thickness	Color Swatches						
	White	Beige	Grey	Mint Green	Green	Blue	Terracotta
2" x 10" x 8mm Ceramic	Matte	Matte	Matte	Matte	Matte	Matte	Matte
6" x 6" x 8.5mm Porcelain	Matte	Matte	Matte	Matte	Matte	Matte	Matte



Chart indicates available size, color, finish and thickness options. Shaded block indicates not available. Sizing is nominal for field tile, trims, and decors.

