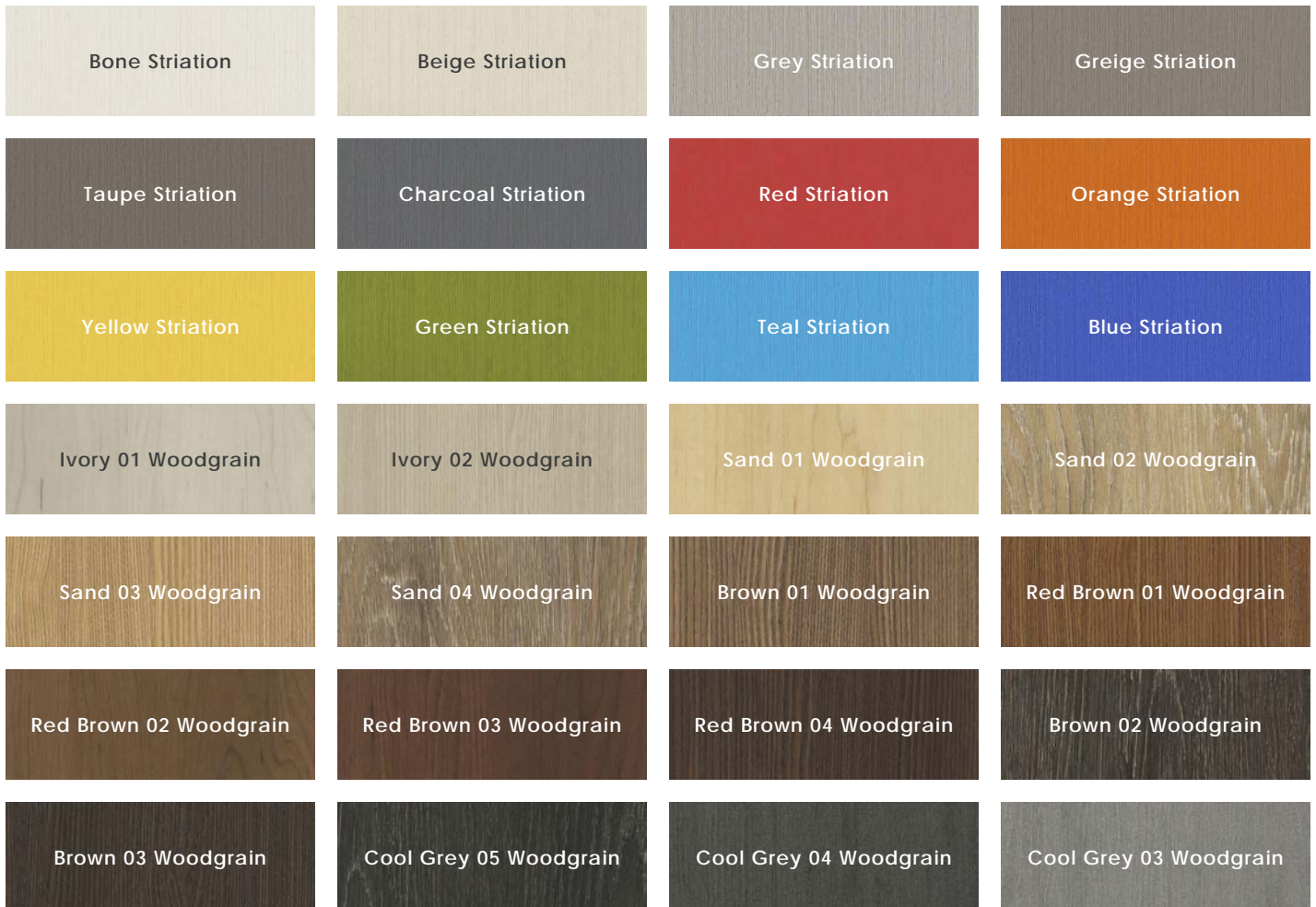




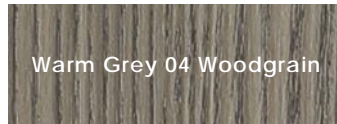
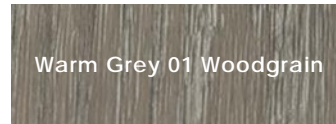
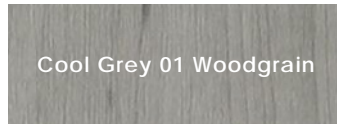
Description

Color+Wood LVT offers a subtle linear pattern on plank sizes in color and wood tones. This unique striation feature fits well in contemporary spaces. Color+Wood LVT features an enhanced urethane wear layer which includes quartz. This enhanced wear layer creates a barrier against dirt, scuffs, and stains.

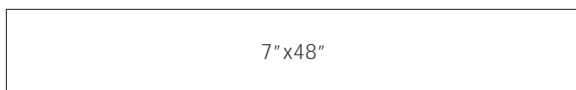
Colors



Colors Cont.



Sizes



Technical Data

| Specification Reference | Test Method | Test Result |
|-------------------------|-------------|--------------------|
| Static Load | ASTM F970 | Passes - 1,000 PSI |
| Heat Resistance | ASTM F1514 | Passes |
| Light Resistance | ASTM F1515 | Passes |
| Chemical Resistance | ASTM F925 | Passes |
| Smoke Density | ASTM E662 | Passes < 450 |
| Flexibility | ASTM F137 | Passes, 1" Mandrel |
| Residual Indentation | ASTM F1914 | Passes < 8% Avg. |
| Flooring Radiant Panel | ASTM E648 | Passes, Class 1 |
| Classification | ASTM F1700 | Class III, Type B |

Wear Layer & Thickness

20 Mil | 2.5mm

Lead Time

2-4 Weeks
Domestic Inventory

Edge Profile

Square

Location

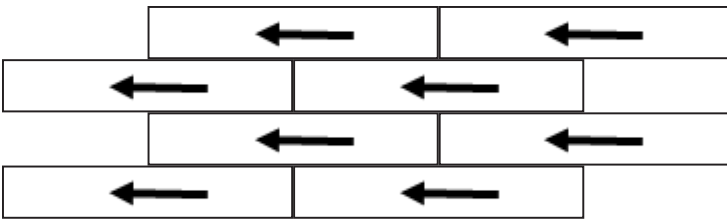
South Korea

| Body Type | Installation |
|-------------------------|--------------|
| Luxury Vinyl Tile (LVT) | Glue Down |

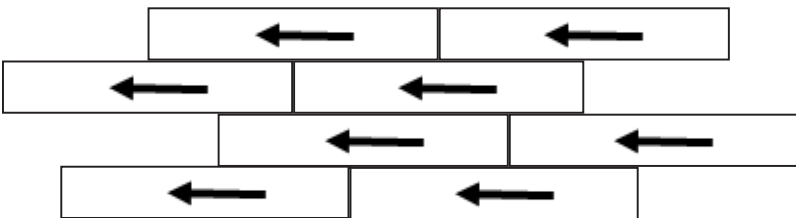




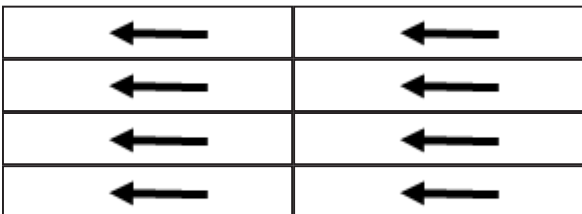
Patterns



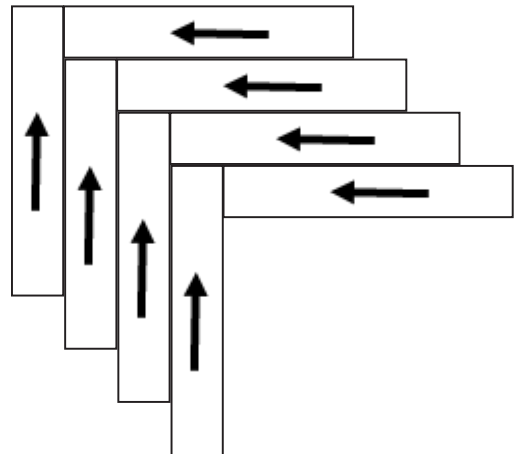
Brick



Stagger



Monolithic



Herringbone

Color•Size•Finish Matrix

| | | | | | |
|-----------------------------------|------------------------|------------------------|------------------------|------------------------|------------------------|
| Color — Size & Thickness | | | | | |
| 7" x 48" x 2.5mm | Bone Striation | Beige Striation | Grey Striation | Greige Striation | Taupe Striation |
| Color — Size & Thickness | | | | | |
| 7" x 48" x 2.5mm | Charcoal Striation | Red Striation | Orange Striation | Yellow Striation | Green Striation |
| Color — Size & Thickness | | | | | |
| 7" x 48" x 2.5mm | Teal Striation | Blue Striation | Ivory 01 Woodgrain | Ivory 02 Woodgrain | Sand 01 Woodgrain |
| Color — Size & Thickness | | | | | |
| 7" x 48" x 2.5mm | Sand 02 Woodgrain | Sand 03 Woodgrain | Sand 04 Woodgrain | Brown 01 Woodgrain | Red Brown 01 Woodgrain |
| Color — Size & Thickness | | | | | |
| 7" x 48" x 2.5mm | Red Brown 02 Woodgrain | Red Brown 03 Woodgrain | Red Brown 04 Woodgrain | Brown 02 Woodgrain | Brown 03 Woodgrain |
| Color — Size & Thickness | | | | | |
| 7" x 48" x 2.5mm | Cool Grey 05 Woodgrain | Cool Grey 04 Woodgrain | Cool Grey 03 Woodgrain | Cool Grey 02 Woodgrain | Cool Grey 01 Woodgrain |
| Color — Size & Thickness | | | | | |
| 7" x 48" x 2.5mm | Warm Grey 01 Woodgrain | Warm Grey 02 Woodgrain | Warm Grey 03 Woodgrain | Warm Grey 04 Woodgrain | |

Chart indicates available size, color, finish and thickness options. Shaded block indicates not available. Sizing is nominal for field tile, trims, and decors.

