

LUMERA GAUGED

creative
materials
corporation



Description

Lumera embodies a symphony of natural stone aesthetics, reinterpreted in enduring porcelain. Inspired by the depth of marble, the quiet refinement of limestone, and the organic texture of travertine, this collection unites nature's most expressive materials into one cohesive surface series. Each tile captures the geological nuances of authentic stone, from soft veining to crystalline movement, creating visual balance and timeless appeal.

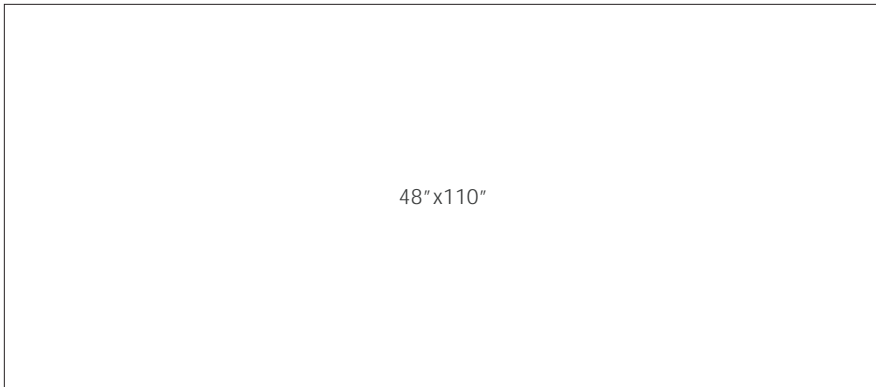
Color



Bianco Dior Bookmatch



Size



Technical Data

| Specification Reference | Test Method | Test Result |
|--------------------------|-------------|---------------------------------------|
| DCOF | ANSI A326.3 | Honed • Interior, Dry (> 0.42 Dry) |
| | | Polished • Interior, Dry (> 0.42 Dry) |
| Water Absorption | ASTM C373 | < 0.1% |
| Breaking Strength | ASTM C648 | 6mm • > 310 lbf |
| Deep Abrasion Resistance | ASTM C1243 | Honed • < 140mm ³ |
| | | Polished • < 140mm ³ |
| Body Type | | Shade Variation |
| Unglazed Porcelain | | V3 |

Finish & Thickness

Honed, Polished | 6mm

Lead Time

2-3 Weeks

Availability

Domestic Inventory

