

Sand Aggregate and Multicolor Triangles

## Description

Continuum brings together color, pattern, and surface texture within a cohesive architectural tile system. Inspired by mineral fragments and contemporary materials, the collection introduces a versatile material expression.

## Porcelain Colors



## Finish & Thickness

Grip, Matte, Polished | 7.4mm, 8mm, 8.2mm, 8.8mm, 10mm, 11mm

Finish varies per size and color – Refer to Color•Size•Finish Matrix

## Lead Time

8-10 Weeks

## Location

Spain



## Ceramic Colors



## Technical Data

Specification Reference	Test Method	Test Result
DCOF	ANSI A326.3	Grip > 0.55 Wet
		Matte > 0.42 Wet
		Polished • < 0.42 Wet
		Ceramic • Not Applicable
Water Absorption	ISO 10545-3	Porcelain • <0.5%
		Ceramic • >10%
Breaking Strength	ISO 10545-4	Porcelain • R>35 N/mm <sup>2</sup> , S>1300N
		Ceramic • R>15 N/mm <sup>2</sup> , S>600N
PEI	ISO 10545-7	IV • Cream Aggregate, Taupe Aggregate, White Aggregate
		III • Crossline, Fan, Green Aggregate, Rosette, Sand Aggregate, Teal Aggregate
		II • Graphite Aggregate, Large Petal, Matrix, Small Petal
<b>Body Type</b>		
Glazed Non Color-Body Porcelain • Ceramic		
<b>Shade Variation</b>		
V1	Cream Aggregate, Graphite Aggregate, Green Aggregate, Sand Aggregate, Taupe Aggregate, Teal Aggregate, White Aggregate	
V2	Cream, Graphite, Green, Sand, Taupe, Teal, White	

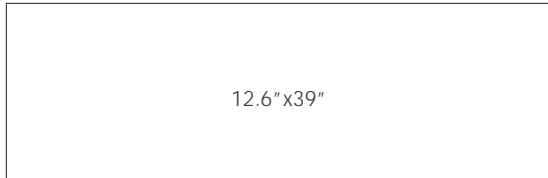
## Ceramic Sizes



1.5"x5"



5"x5"

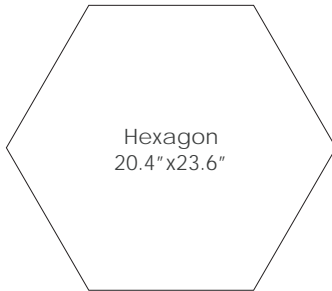


12.6"x39"

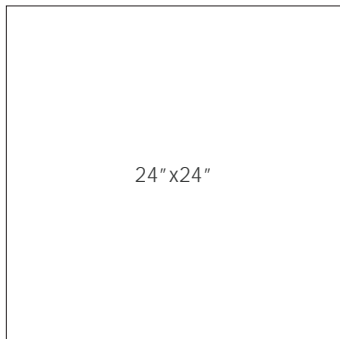
## Porcelain Sizes



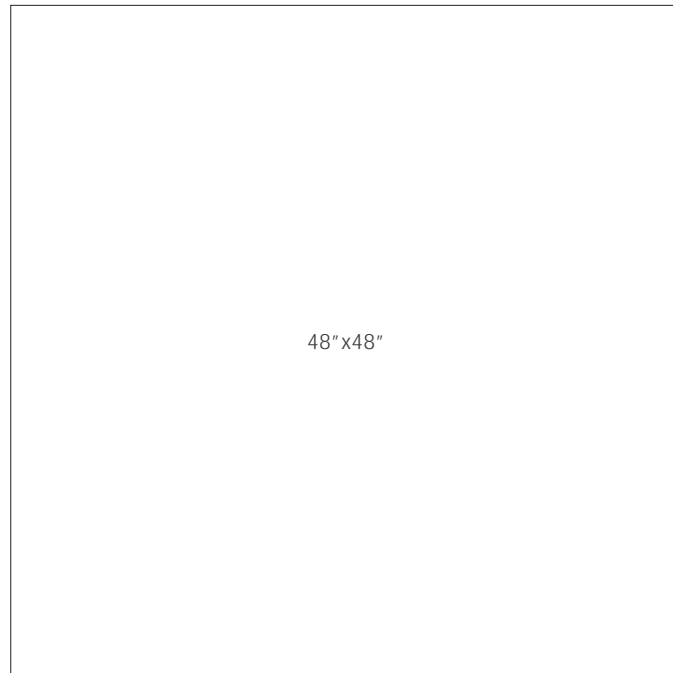
8"x8"



Hexagon  
20.4"x23.6"



24"x24"



48"x48"



32"x32"



## Porcelain Decor

8" x 8" x 8mm | Available in Grip or Matte



Crossline



Fan



Matrix



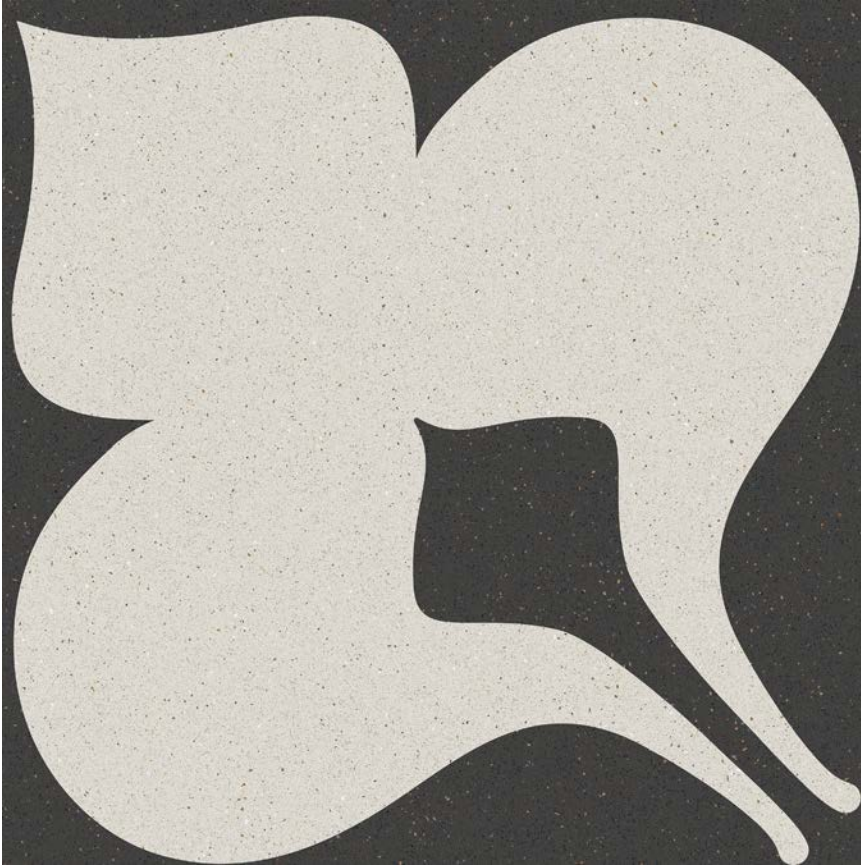
Small Petal



Rosette

## Porcelain Decor

48"x48"x11mm | Available in Matte or Polished



Large Petal



FLOOR | Green Aggregate • WALL | Multicolor Chevron



FLOOR | Sand Aggregate and Taupe Aggregate  
WALL | Sand Aggregate and White Slatted

## Porcelain Decor

2" x 2" Mosaic on 12" x 12" x 8.2mm Sheet Matte



White Aggregate



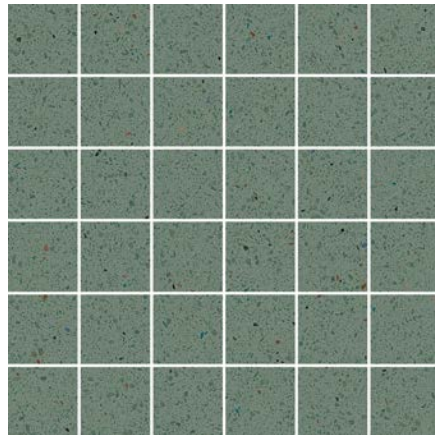
Cream Aggregate



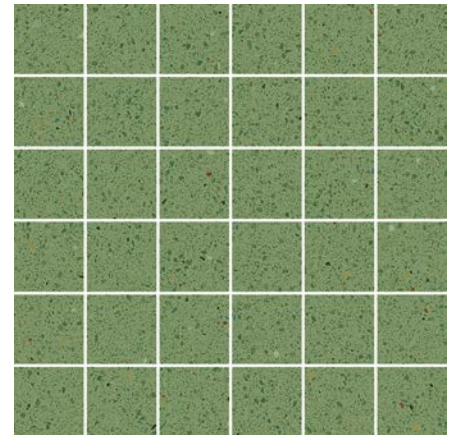
Taupe Aggregate



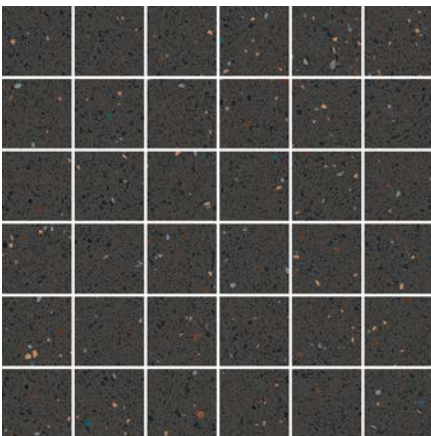
Sand Aggregate



Teal Aggregate



Green Aggregate



Graphite Aggregate

## Ceramic Decor

12.6" x 39" x 8.8mm Matte Rectified



White



White Slatted



Cream Striped



Taupe Striped



Sand Striped



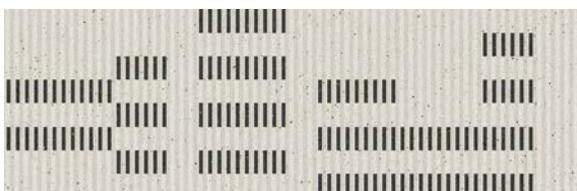
Green Striped



Teal Striped



Graphite Striped



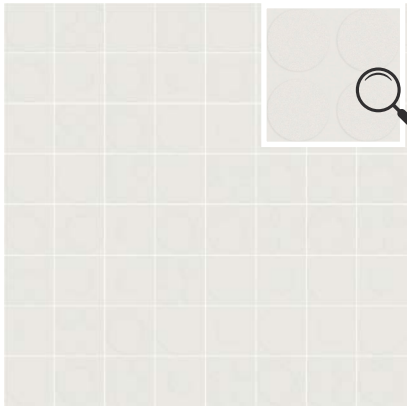
White Barcode\*



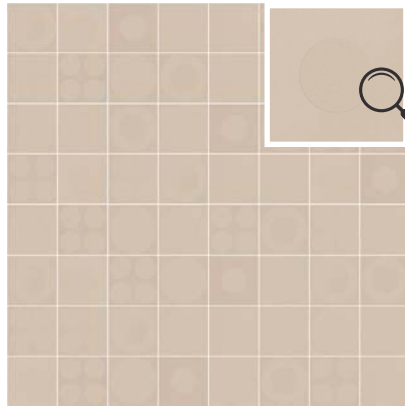
**White Barcode:** This product is packaged randomly, so you may notice variations in the percentages from one box to another. The panel above shows the different available designs.

## Ceramic Decor

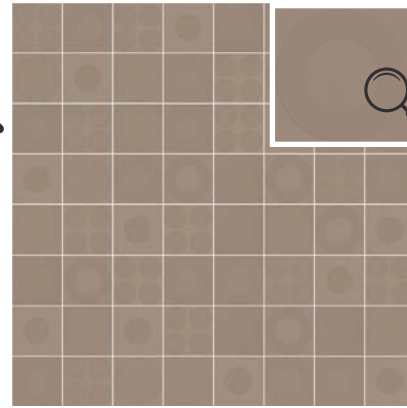
5" x 5" x 7.4mm Matte



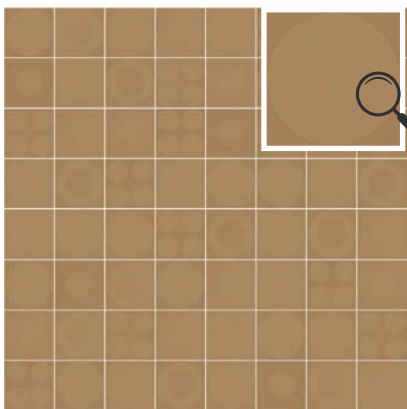
White Circle Mix



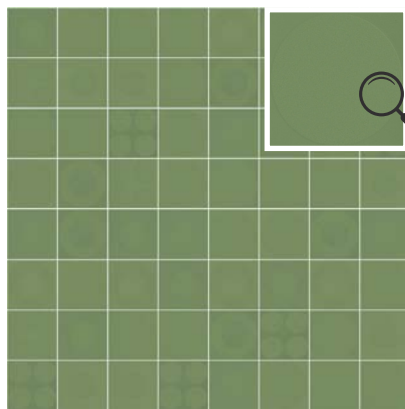
Cream Circle Mix



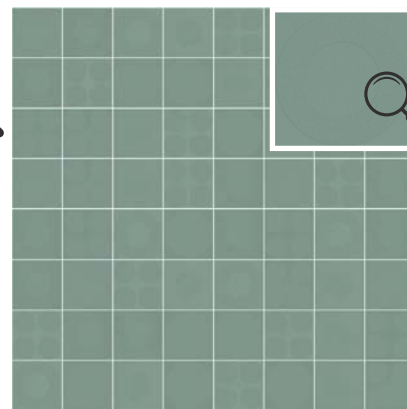
Taupe Circle Mix



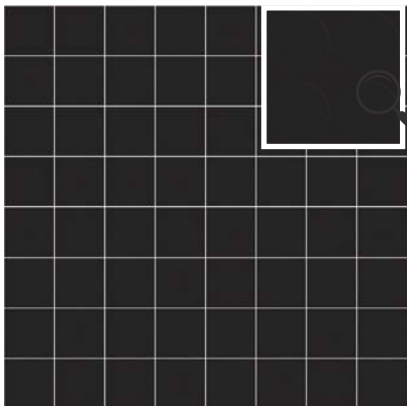
Sand Circle Mix



Green Circle Mix



Teal Circle Mix



Graphite Circle Mix

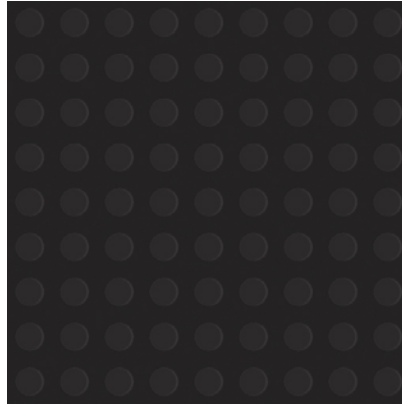
These products are packaged randomly, so you may notice variations in the percentages from one box to another. The panels above show the different available designs.

## Ceramic Decor

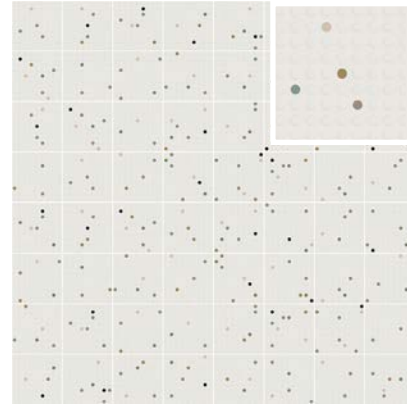
5"x5"x7.4mm Matte



White Tonal Dots



Graphite Tonal Dots



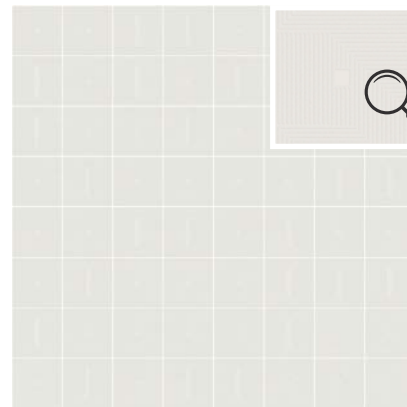
Multicolor Dots



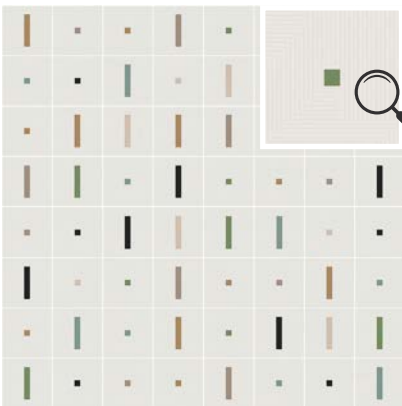
White Frame



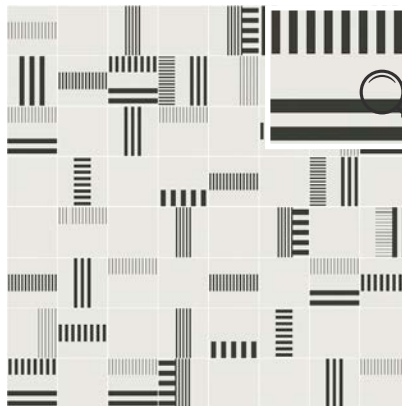
Graphite Frame



Dot and Dash



Dot and Dash Multicolor



Bands

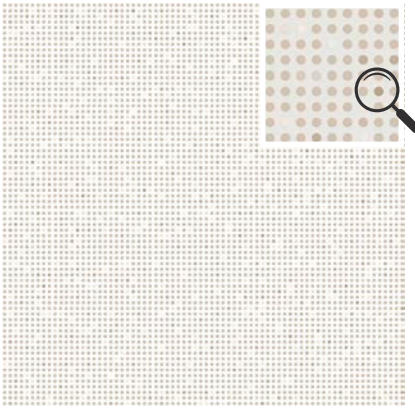


Multicolor Inset

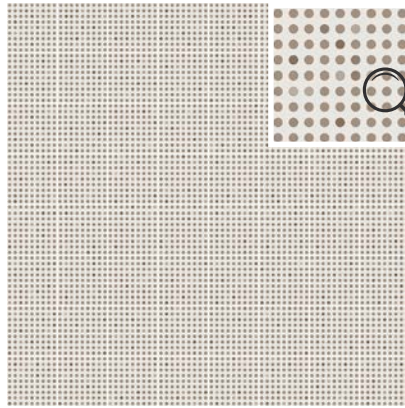
These products are packaged randomly, so you may notice variations in the percentages from one box to another. The panels above show the different available designs.

## Ceramic Decor

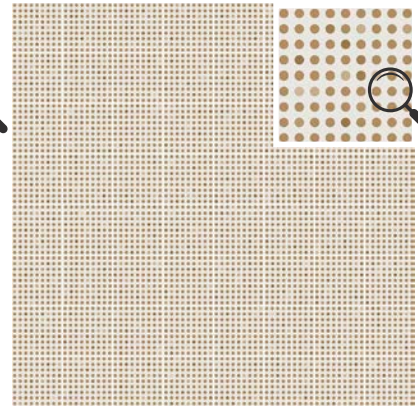
5" x 5" x 7.4mm Matte



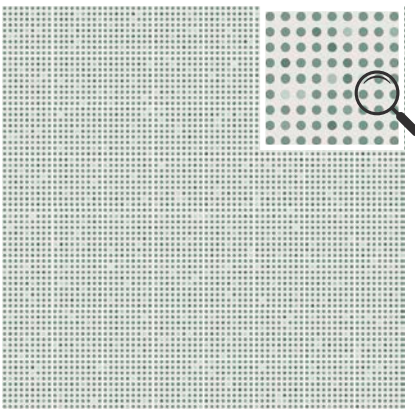
Cream Contrast Dots



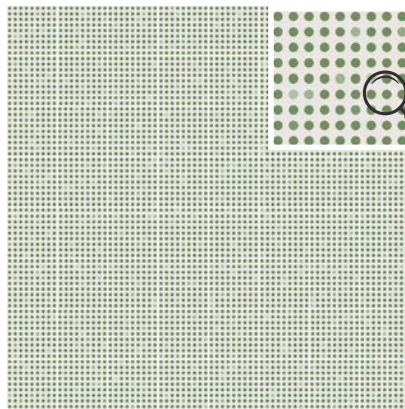
Taupe Contrast Dots



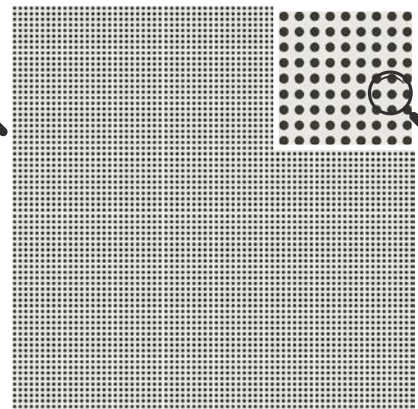
Sand Contrast Dots



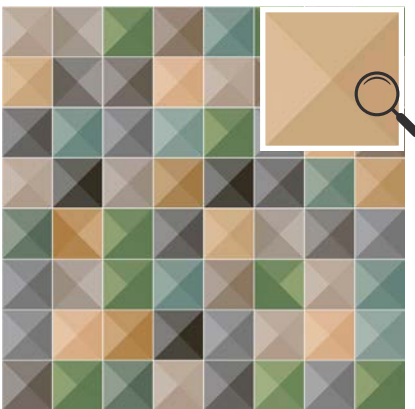
Teal Contrast Dots



Green Contrast Dots



Graphite Contrast Dots



Multicolor Triangles



Multicolor Checker



Multicolor Chevron

These products are packaged randomly, so you may notice variations in the percentages from one box to another. The panels above show the different available designs.

# CONTINUUM

creative  
materials  
corporation

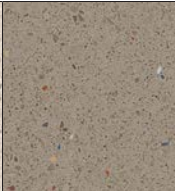
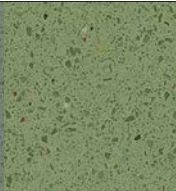
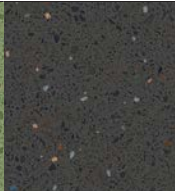


FLOOR | Taupe Aggregate  
WALL | Cream, Graphite, Green, Sand, Taupe, Teal,  
and White



FLOOR | Graphite • WALL | Dot and Dash Multicolor

## Color•Size•Finish Matrix

Color — Size & Thickness							
Porcelain	White Aggregate	Cream Aggregate	Taupe Aggregate	Sand Aggregate	Teal Aggregate	Green Aggregate	Graphite Aggregate
8" x 8" x 8mm Non-Rectified	Grip Matte						Grip Matte
Hexagon 20.4" x 23.6" x 8.8mm Non-Rectified	Matte	Matte	Matte	Matte	Matte	Matte	Matte
24" x 24" x 8.8mm Non-Rectified	Matte	Matte	Matte	Matte	Matte	Matte	Matte
24" x 24" x 8.8mm Rectified	Matte	Matte	Matte	Matte	Matte	Matte	Matte
32" x 32" x 10mm Rectified	Grip Matte	Grip Matte	Grip Matte	Grip Matte	Grip Matte	Grip Matte	Grip Matte
48" x 48" x 11mm Rectified	Matte Polished						Matte Polished

Color — Size & Thickness							
Ceramic	White	Cream	Taupe	Sand	Teal	Green	Graphite
1.5" x 5" x 7.4mm Non-Rectified	Matte	Matte	Matte	Matte	Matte	Matte	Matte
5" x 5" x 7.4mm Non-Rectified	Matte	Matte	Matte	Matte	Matte	Matte	Matte

Chart indicates available size, color, finish and thickness options. Shaded block indicates not available. Trim can be found on the next page. Sizing is nominal for field tile, trims, and decors.

